

SUBMITTAL CERTIFICATION TRANSMITTAL

PROJECT: _____ CONTRACTOR'S PROJ. NO.: _____

CONTRACTOR: _____ ENGINEER'S PROJ. NO.: _____

ENGINEER: _____

TRANSMITTAL NO.: _____ SHOP DRAWING NO.: _____

SPECIFICATION SECTION OR DRAWING NO.: _____

DESCRIPTION: _____

MANUFACTURER: _____

The above referenced submittal has been reviewed by the undersigned and I/we certify that the material and/or equipment meets or exceeds the project specification requirements with

NO DEVIATIONS

or

A COMPLETE LIST OF DEVIATIONS AS FOLLOWS^a

By: _____

Contractor^b

By: _____

Manufacturer^c

Date: _____

Date: _____

^a Any deviations not brought to the attention of the Engineer for review and concurrence shall be the responsibility of the contractor to correct, of so directed.

^b Required on all submittals

^c When required by specifications



Sewage and Trash Pump

DV150c

Overview:

The 6" suction x 6" discharge self-priming centrifugal DV150c trash and sewage pump provides up to a maximum of 2,775 gallons per minute pumping and up to 150 feet of head. This pump is usually mounted on a trailer and features the standard PowerPrime Clean Prime Venturi priming system which allows it to run continuously, unattended and even run dry.

Features:

- Suction lift to 28 feet
- Continuous self-priming
- Runs dry unattended
- Auto-start capable control panel
- Electric Drive option
- Sound Attenuated option

Specs:

Maximum Flow	2,775 GPM
Maximum Head	150 feet
Pump Size	6" x 6"
Maximum Solids Handling	3 inches
Dry weight	
Footprint: Trailer mounted model	135.25" x 66"



Accessories:

- Spillguard
- Suction and Discharge Hoses
- Fuel Nurse Tank
- VFD for electric driven models



PUMPS • TANKS • FILTRATION • PIPE • SPILLGUARDS

Rain for Rent is a registered trademark of Western Oilfields Supply Company. Features and specifications are subject to change without notice.

Liquid Ingenuity.
800-742-7246
rainforrent.com

PowerPrime™ Pumps

CURVE:

PUMP : DV-150c

SUCTION
6"

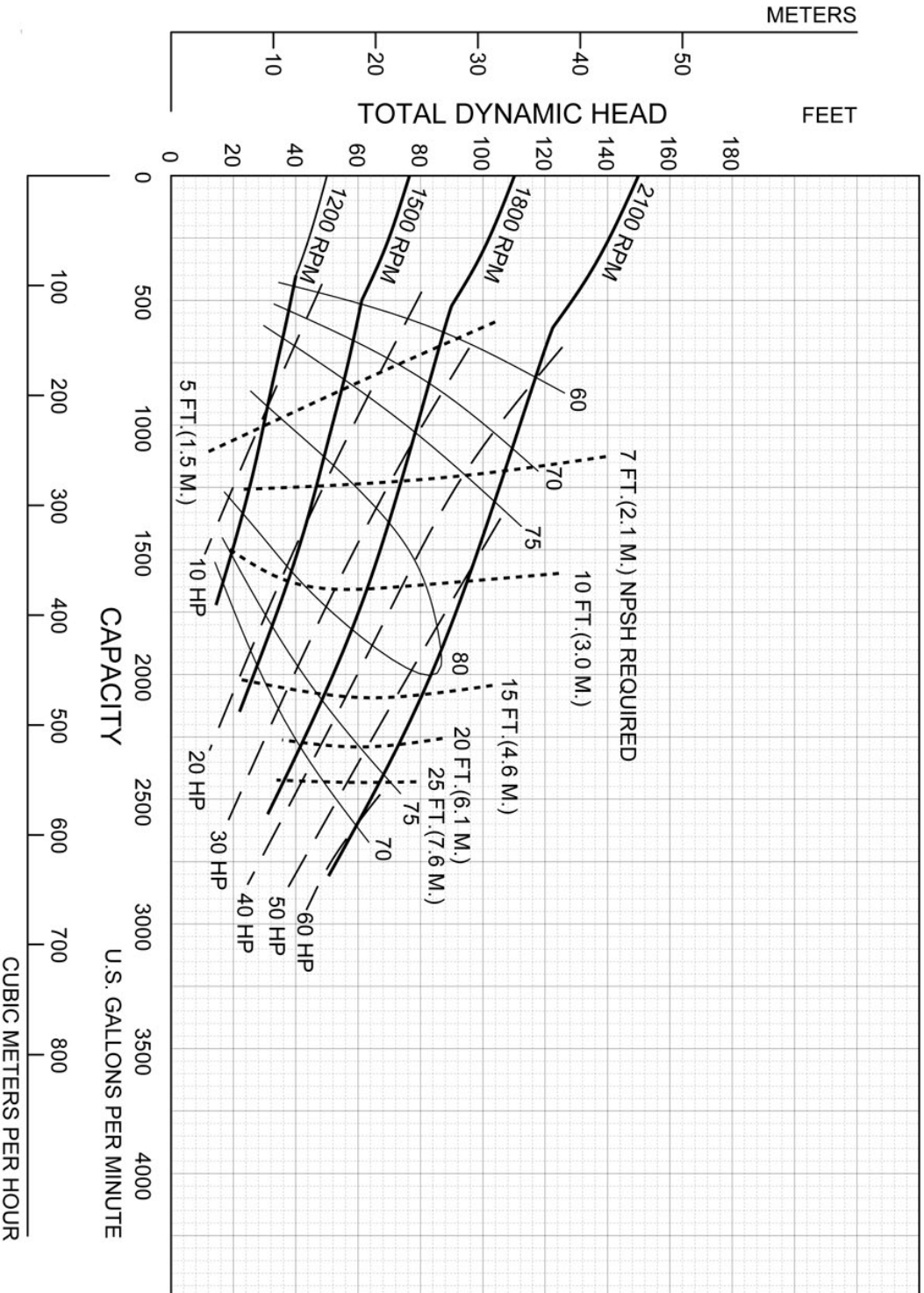
DISCHARGE
6"

MAX. SPHERE
3"

IMPELLER
2 VANE

IMPELLER
10.09"

ALL INFORMATION CONTAINED IN OR DISCLOSED BY THIS DOCUMENT IS CONSIDERED CONFIDENTIAL AND PROPRIETARY BY RAIN FOR RENT. ALL DISCLOSURES OF DESIGN INFORMATION AND REPRODUCTION OF THIS DOCUMENT AND ALL SALES RIGHTS ARE EXCLUSIVELY RESERVED BY AND TO RAIN FOR RENT AND COMMUNICATION OF THIS INFORMATION TO OTHERS IS PROHIBITED WITHOUT THE PRIOR WRITTEN CONSENT OF RAIN FOR RENT

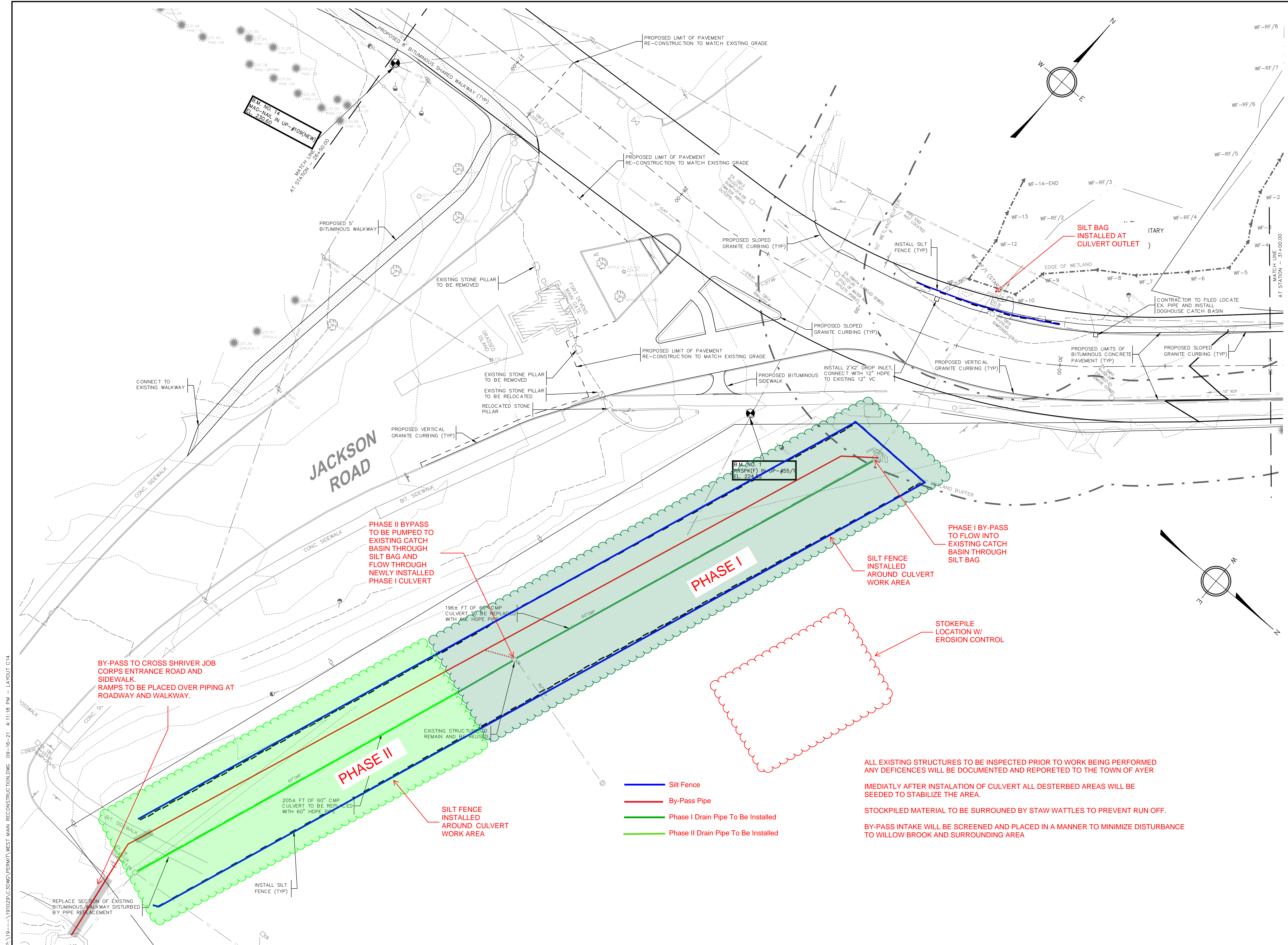


FLOW - CLEAR WATER PERFORMANCE (US GPM)

CONFIDENTIAL

-PUMP PERFORMANCE CURVES DO NOT INCLUDE CHECK VALVE LOSSES

-POWER CURVES INCLUDES AIR COMPRESSOR POWER CONSUMPTION




P:\19-11-191029\C3D\C3D\PERMITS\WEST MAIN RECONSTRUCTION.DWG 09-16-21 4:11:18 PM - LAYOUT C14

CERTIFICATION:

BID SET
ADDENDA 1

STATUS:

ENGINEER:



Ayer DPW
25 Brook Street
Ayer, Massachusetts

REVISIONS:

MARK	DATE	DESCRIPTION
	9/16/21	ADDENDUM #1

PROJECT NO: 191029
WORK ORDER NO:
PROJECT NAME:
WEST MAIN STREET
ROADWAY IMPROVEMENTS

AUTHOR:
DRAFTER: MCL
CHECKED BY: KFB
DATE: AUGUST 2021
SHEET TITLE:
GRADING, DRAINAGE AND
PAVING PLAN
STA. 26+50 TO 31+00

SHEET:

C14

2021 © COPYRIGHT TOWN OF AYER, MASSACHUSETTS DPW